

DocuTracks Version 2.0

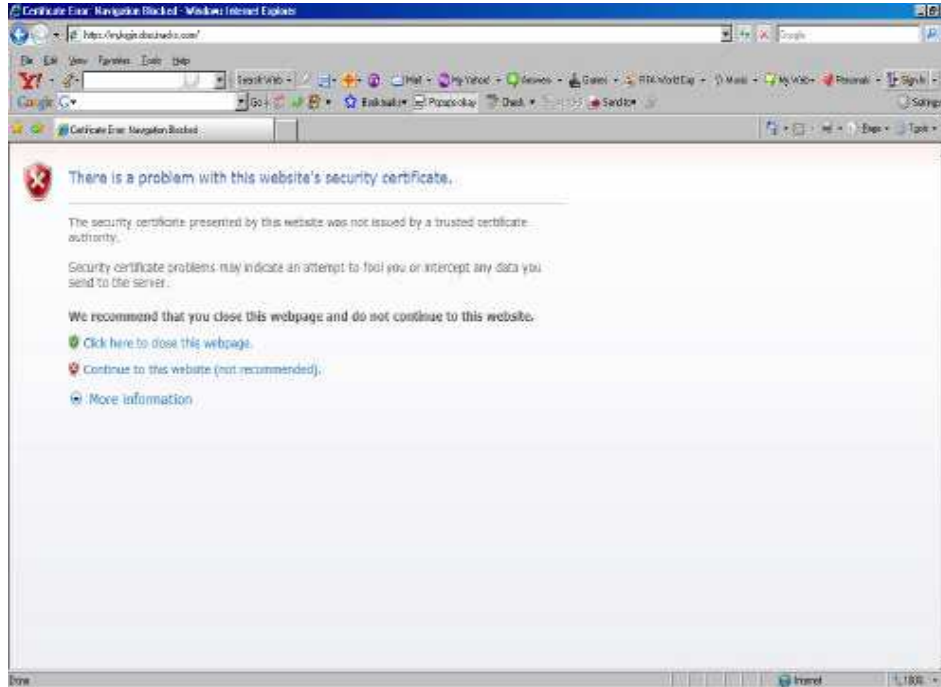
Installation SSL Certificate Guide For IE 7.0

Docutracks Installation Steps

Step 1

Enter the web URL <http://mylogin.docutracks.com> in the browser [**Internet Explorer 7.0**]

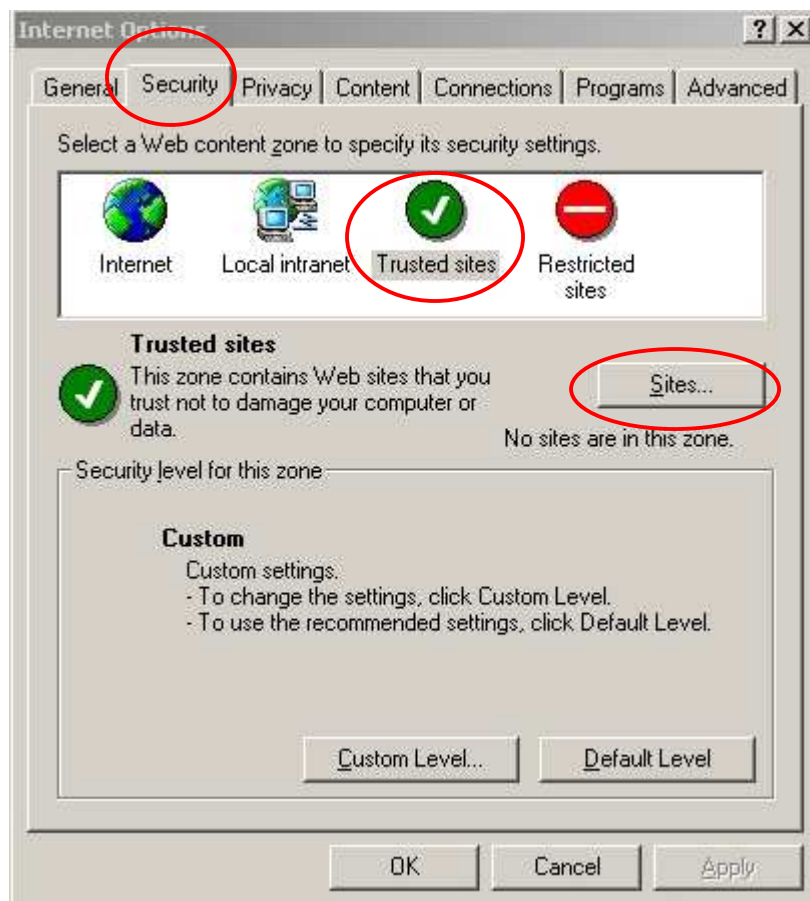
The SSL Certificate message appears as shown below.



Note: This SSL Certificate will appear only for the initial Docutracks installation procedure.

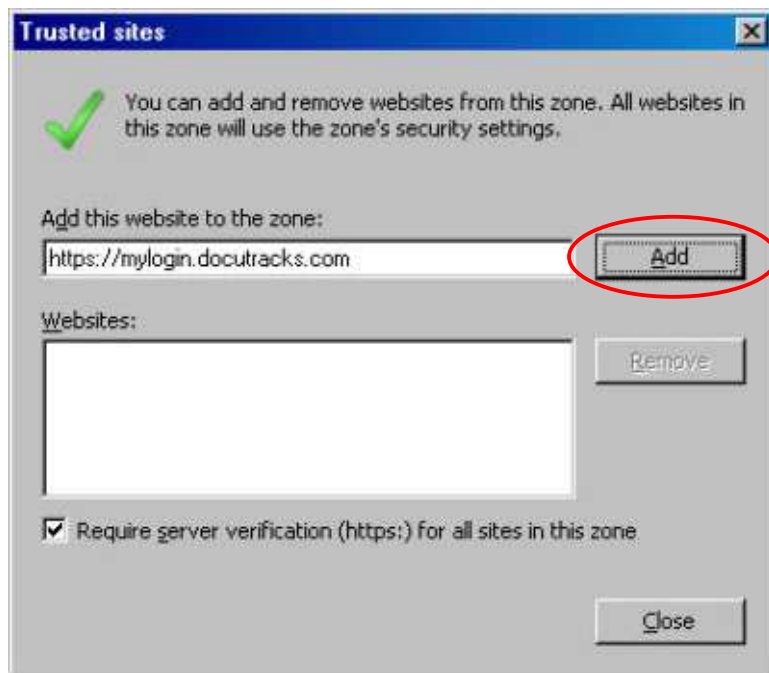
To avoid this message do the following:

- Go to the Tools -> Internet Options
- Click on the Security Tab and select Trusted sites option.
- Click Sites button

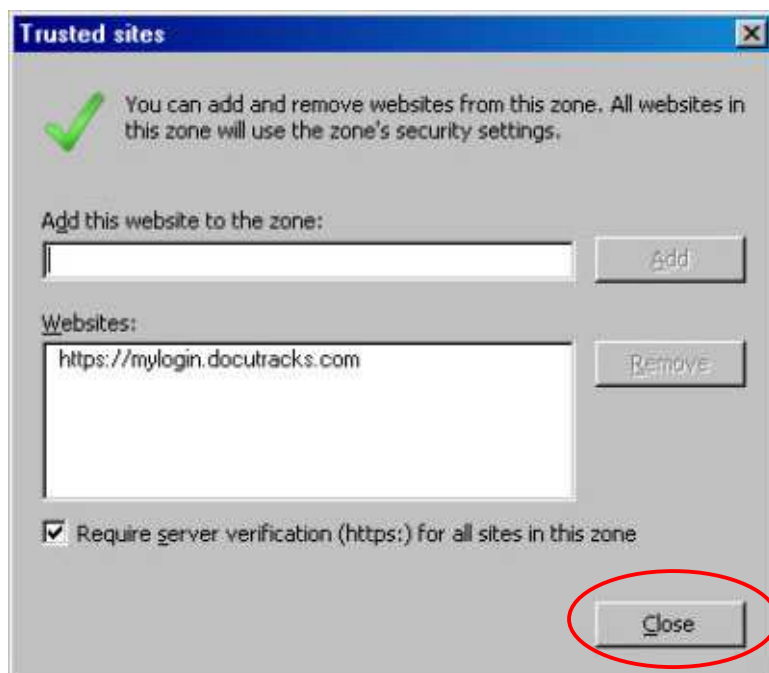


Step 2

Enter the website URL <https://mylogin.docutracks.com> and click Add button.



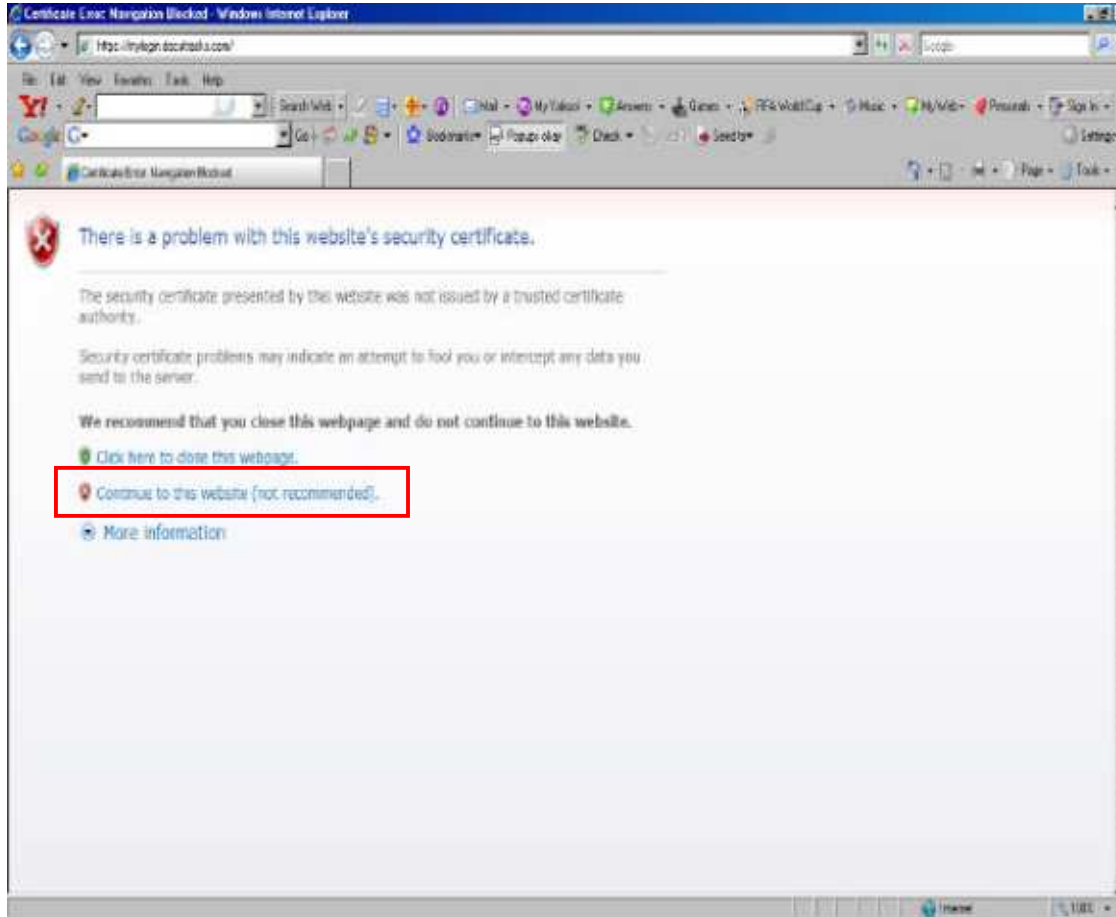
The website URL <https://mylogin.docutracks.com> is added.



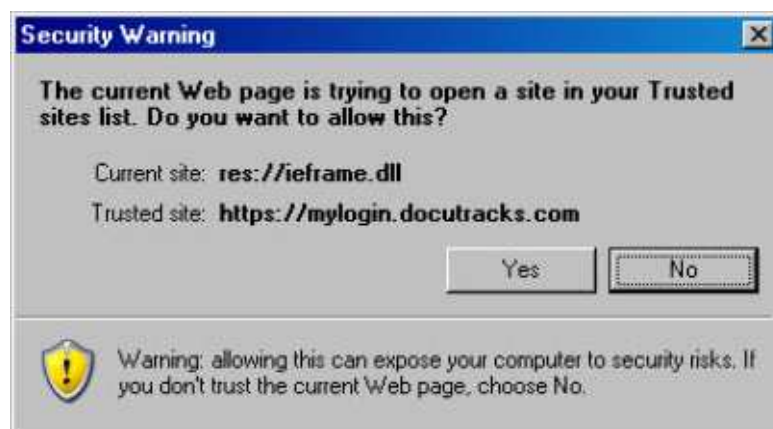
Click Close button.

Step 3

Click **Continue to the website (not recommended)** option displayed in the following window.



The Security Warning Screen appears, click on Yes button.



The DocuTracks Login window appears as displayed below.

Step 4

Enter the Login and Password in the Login Screen.

